

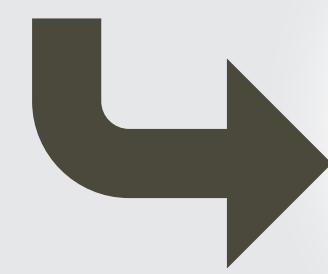
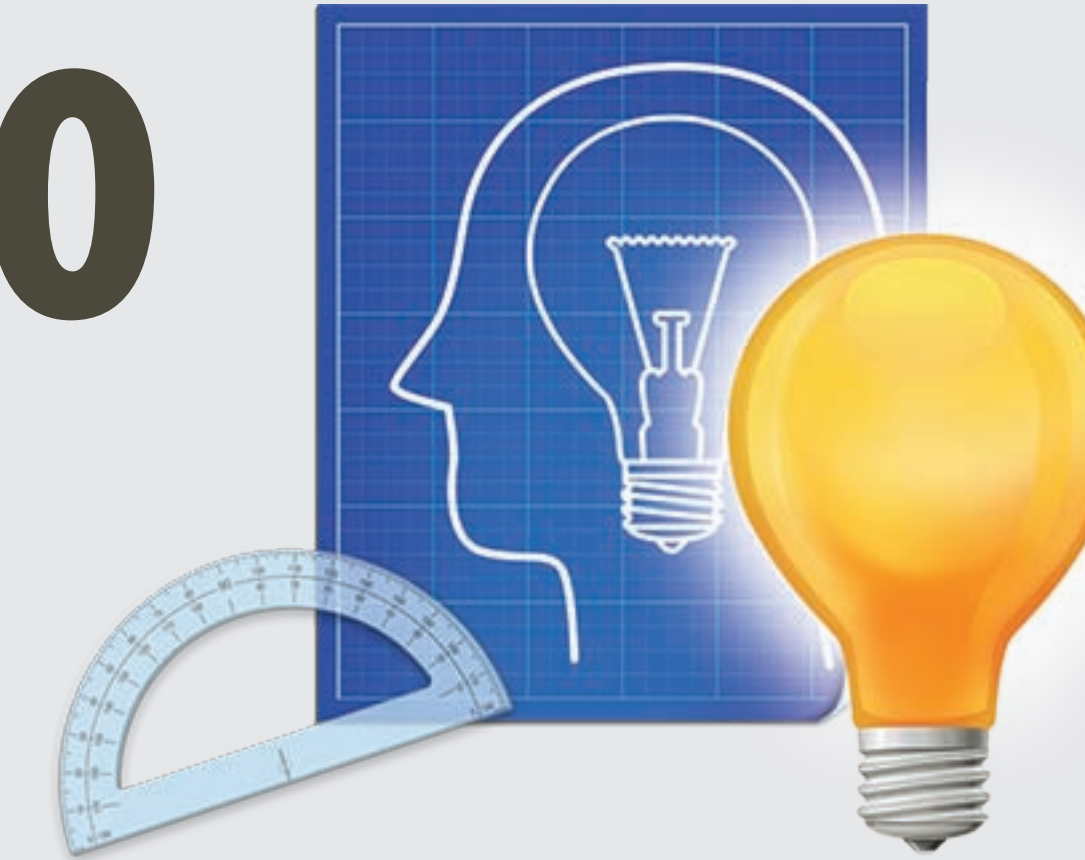


1 IDEATION *Explore the Opportunity*

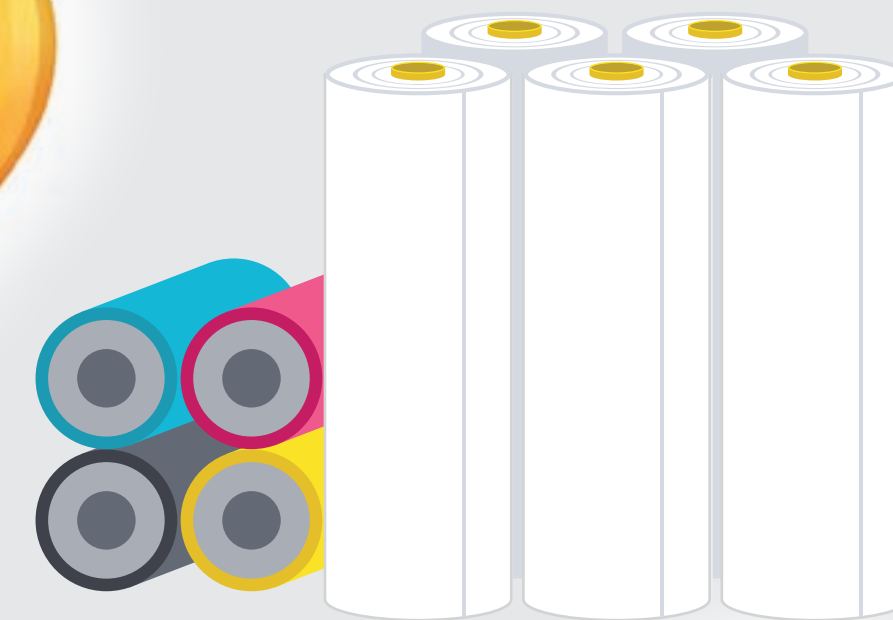


- Your custom chemistry
- Formulation expertise
- Lab draw downs
- Material analysis and testing

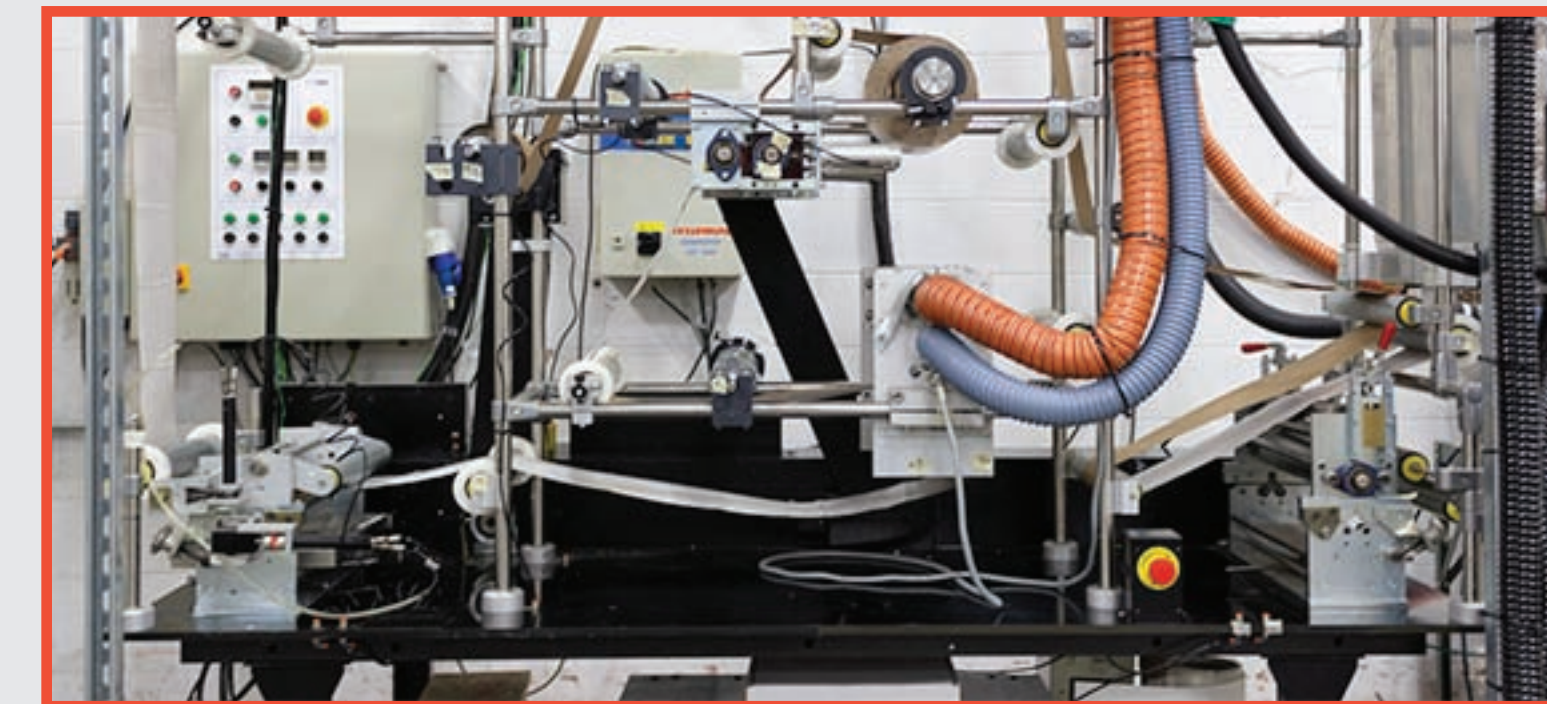
BRING YOUR IDEAS TO LIFE WITH KAPCO



CAPABILITY & EXPERTISE ADVANTAGE



- Rod coater
- Slot die coater
- 12" coating capability
- Corona treating
- Lamination
- Controlled drying: IR & 3 hot air zones
- Permanent adhesives
- Removable adhesives
- Functional top coats
- Wide selection of substrates

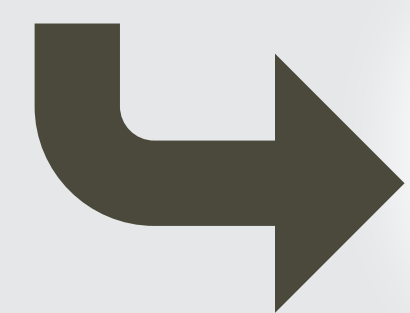


Kapco

KENT ADHESIVE PRODUCTS CO.

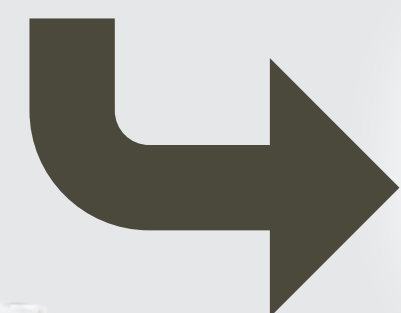
www.Kapco.com

800-843-5368



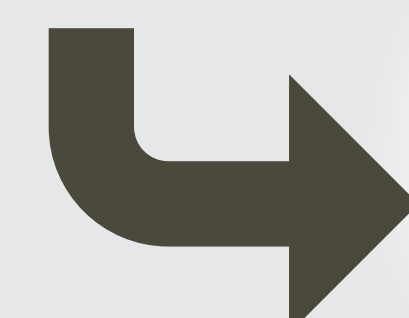
PRODUCTION FEASIBILITY *Develop Your Production*

- Custom trials
- Minimal material requirements
- Scaleable features including:
 - Up to 31 inches wide
 - Closed loop tension control
 - Air flotation ovens
 - In-line corona treating
 - Laminator
 - Two coats in one pass on same side



SCALE TO PRODUCTION *Refine Your Process*

- Production capabilities include:
 - Reverse gravure: 1-40 gsm
 - Reverse roll: three roll design
 - 39-81 Inches wide
 - Two-sided coating in one pass
 - Air flotation ovens
 - Supplemental IR ovens
 - Two-sided in-line corona treating
 - Ancillary smoothing bar
 - Cross web profiling for lay-flat
 - Laminator



CUSTOM CONVERTING *Capture Process Synergy with Our Complete Capabilities*

- Slitting
- Laminating
- Die-cutting
- Packaging

To get started now email converting@kapco.com!